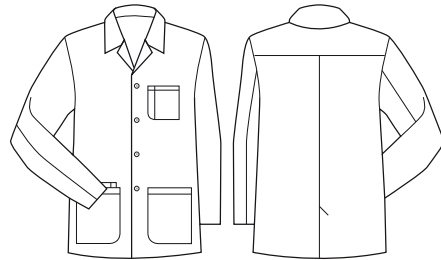




## HOPE MENS CROPPED LAB COAT

CC144MC



### COLOURS

WHITE

### GARMENT MEASUREMENTS

SIZE	XS	S	M	L	XL	2XL	3XL
½ CHEST* (CM)	54.5	57	59.5	62	64.5	67	71.5
LENGTH FROM HSP (CM)	78	79	80	81	82	83	84
SLEEVE LENGTH FROM LSP (CM)	63	64	65	66	67	68	69

½ CHEST MEASURED 2.5CM BELOW UNDERARM

### STYLE F&B

- Biz Care braded buttons
- Multiple deep and durable front pockets
- Chest pocket, with pen slot
- Internal pocket- great for phone, spectacles, wallet etc
- Internal ID label
- Headphone buttonhole inside lapel
- Self-fabric loop inside neck seam for hanging coat
- Back yoke for tailored fit across shoulders
- All stress points bar tacked
- Back vent opening

### FABRIC COMPOSITION

- Main: 65% Polyester 35% Cotton
- Teflon® Stain Release for easy removal of most stain

### CARE DETAILS

- Wash warm at 40°C for longevity of stain release



ALL MEASUREMENTS ARE APPROXIMATE AND ARE FOR REFERENCE ONLY. COLOURS ARE REPRODUCED AS CLOSELY AS PRINTING ALLOWS.