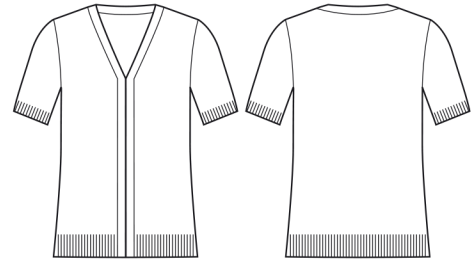


WOMENS ZIP FRONT  
SHORT SLEEVE KNIT

CK962LC



COLOURS



GARMENT MEASUREMENTS

SIZE	XXS	XS	S	M	L	XL	2XL	3XL	4XL
½ CHEST* (CM)	40.5	43.5	46.5	49.5	52.5	55.5	59.5	62.5	65.5
LENGTH FROM HSP (CM)	65.5	66.5	67.5	68.5	69.5	70.5	71.5	72.5	73.5

½ CHEST MEASURED 2.5CM BELOW UNDERARM

STYLE F&B

- Set in sleeve
- Minimal metal in zips
- Sleeve length 28CM (size 10), and should sit just above the elbow to assist with infection control
- Longer hem length, designed to sit below bottom
- Ribbed hem and sleeves for a clean finish and flattering fit

FABRIC COMPOSITION

- 60% Acrylic 40% Merino Wool
- 14GG
- Fully fashioned Biz Care knits provide warmth, durability and a soft hand feel
- 60% acrylic provides extra durability required for functional roles

CARE DETAILS

- Machine wash warm on gentle cycle, with like colours inside out, using wool approved detergent. Do not wring, do not bleach. Reshape and dry flat in shade. Cool iron if required with press cloth. Do not dry clean.

MATCH WITH

- Biz Collection 2 way zip cardigan suitable for a long sleeve option LC3505
- Biz Care button front cardigan suitable for a long sleeve option CK045LC

