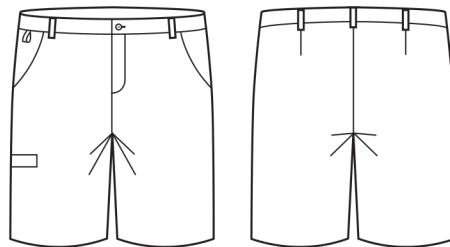


MENS
CARGO SHORT

CL960MS



COLOURS



GARMENT MEASUREMENTS

| SIZE | 72 | 77 | 82 | 87 | 92 | 97 | 102 | 107 | 112 | 117 | 122 | 127 |
|------------------------|----|------|----|------|----|------|-----|------|-----|------|-----|------|
| ½ WAIST RELAXED (CM) | 35 | 37.5 | 40 | 42.5 | 45 | 47.5 | 50 | 52.5 | 55 | 57.5 | 60 | 62.5 |
| ½ WAIST STRETCHED (CM) | 39 | 41.5 | 44 | 46.5 | 49 | 51.5 | 54 | 56.5 | 59 | 61.5 | 64 | 66.5 |
| IN LEG (CM) | 26 | 26 | 26 | 26 | 26 | 26 | 26 | 26 | 26 | 26 | 26 | 26 |

STYLE F&B

- Subtle elastic waist band that will stretch out when worn
- Elastic waist provides extra comfort and ease of movement by providing an extra ½ size when stretched
- Straight leg short, no side splits
- Designed to finish just above the knee
- 2x front angled side pockets, RHS welt pocket with Velcro closure, LHS back welt pocket
- 3cm hem allowance, no inseam allowance
- 6 belt loops
- Key/swipe card loop on RHS pocket

FABRIC COMPOSITION

- 64% Polyester 34% Viscose 2% Elastane
- Made from a lightweight plain weave fabric, it's breathable and comfortable making it perfect for all climates and health care roles

CARE DETAILS

- Warm gentle machine wash 40°. Wash inside out with similar colours. Do not bleach, soak or tumble dry. Line dry in shade. Cool iron if required.

MATCH WITH

- Mix and match with the other Functional lowers from the Biz Care range
- Also a great style for cleaners/hospitality in warmer climates who are after a durable lightweight option

