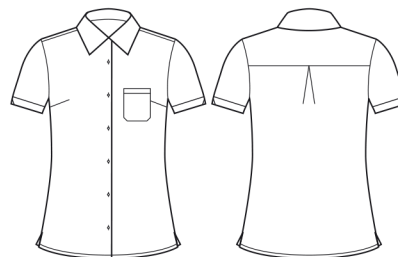


FLORENCE WOMENS SHORT SLEEVE SHIRT

CS948LS



COLOURS



GARMENT MEASUREMENTS

SIZE	4	6	8	10	12	14	16	18	20	22	24	26	28	30
½ CHEST* (CM)	44.75	46	48.5	51	53.5	56	58.5	63.5	66	68.5	71	73.5	76	78.5

* ½ CHEST MEASURED 2.5CM BELOW UNDERARM

STYLE F&B

- Slightly longer hem length, can be worn tucked in or out
- Small feminine chest pocket
- Secret bust button between 2nd and 3rd buttons for extra modesty
- True short sleeve length, with triangle cut-out detailing on sleeves
- Dyed to match buttons for minimalistic finish, and allows monogram to stand out
- Classic fit, perfect for all body shapes

FABRIC COMPOSITION

- 94% Polyester 6% Elastane – no treatments on this fabric
- 2 way stretch for extra comfort and ease of movement

CARE DETAILS

- Machine wash warm (40°C max) with like colours, inside out - to hold vibrancy of colours. Do not bleach, hang to dry away from sunlight, do not tumble dry. Cool iron if required, dry cleanable.

MATCH WITH

- Also available in S/S tunic style CS950LS
- Matching solid colour styles available in S/S shirt CS947LS, 3/4 sleeve shirt CS951LT and S/S tunic style CS949LS
- Add Marley Jersey T-top CS952LS in matching colours for wardrobe depth
- Men's coordinating shirts available in Biz Collection - Oasis, Metro, Monaco and Crew Polos

