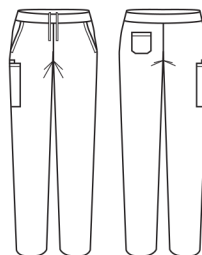


RILEY WOMENS STRAIGHT LEG SCRUB PANT

CSP047LL



COLOURS



GARMENT MEASUREMENTS

SIZE	XXS	XS	S	M	L	XL	2XL	3XL
½ WAIST RELAXED (CM)	30.5	34.25	38	41.75	45.5	49.25	53	56.75
½ WAIST STRETCHED (CM)	38.5	42.25	46	49.75	53.5	57.25	61	64.75
IN LEG (CM)	77	77	77	77	77	77	77	77

½ HIP MEASURED 21CM FROM TOP OF WAISTBAND

STYLE F&B

- Cargo pockets have a back gusset for extra capacity, front of cargo pocket has been stitched down for a clean look
- Side pockets in self fabric
- LHS back patch pocket
- Utility loops on RHS cargo pocket - no bungee cord on pants
- Slight tapering through the leg
- Yoga style flat elastic waist band and draw string closure on the inside
- 2.5cm hem allowance

FABRIC COMPOSITION

- Main: 52% Cotton 45% Polyester 3% Elastane
- Waist Band: 88% Polyester 12% Elastane with antibacterial treatment, Navy on all colourways
- Suitable for warmer climates
- Soft against the skin - base layer not required

CARE DETAILS

- Machine washable at 60°C with like colours, inside out - to hold vibrancy of colours. Do not bleach, tumble dry low. Cool iron if required, dry cleanable.

MATCH WITH

- Wear with its matching scrub top CST043LS
- Jogger style pant available in Electric Blue and Midnight Navy CSP042LL

