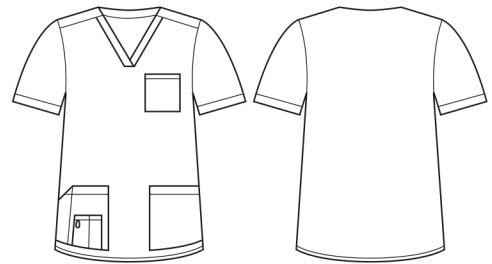


## AVERY MENS V-NECK SCRUB TOP

CST945MS



### COLOURS



### GARMENT MEASUREMENTS

SIZE	XS	S	M	L	XL	2XL	3XL	4XL	5XL
½ CHEST* (CM)	51	54	57	60	64	68	72	76	80
LENGTH FROM HSP (CM)	76.7	77.4	78.1	78.8	79.8	80.8	81.8	82.8	83.8

½ CHEST MEASURED 2.5CM BELOW UNDERARM

### STYLE F&B

- 5 pockets, and 1x chest pocket
- All stress points bar-tacked
- Utility loops in self fabric in RHS pocket
- Bungee loop for swipe card/keys
- Classic fit, perfect for all body shapes
- Functional side splits to allow easy access into pant pockets and for movement
- Straight front and back hem designed to sit just below the bottom
- Modest neck-line

### FABRIC COMPOSITION

- 96% Polyester 4% Elastane, with wicking finish
- Easy-care, wash and wear performance fabric for the most demanding of environments
- Suitable for warmer climates
- Excellent Fade Resistance means 'blacks stay black' and colours stay vibrant for longer
- Soft against the skin - camisoles/t-shirts underneath is not required

### CARE DETAILS

- Machine washable at 60°C with like colours, inside out - to hold vibrancy of colours. Do not bleach, do not tumble dry. Cool iron if required, dry cleanable. Quick drying.

### MATCH WITH

- Wear with its matching scrub lower available in a straight leg style
- Can be worn with functional lowers - as an alternative style to shirts/polos

